



S2VR Duo Quick Installation Sheet

Thank you for choosing CalDigit. This quick installation sheet is for reference only. Please check the detailed manual on the provided CD, and also check our website at www.caldigit.com for updated drivers/software.

1. Product Specification:

Physical Dimensions:	9.76" L X 5.12" W X 4.26" H / 247.87mm L X 130mm W X 108mm H
Power:	100-240V auto switch 50~64Hz 1.5A, Output 5V 4.2A, 12V 3A
Operating temperature:	0-40 degrees C or 32° to 104°F
Weight (net):	7.5lb / 3.4kg

2. System Requirements:

- PC or Mac with an available PCI-e or PCI-X slot 500 Mhz or faster**
- CD-ROM Drive
- 1GB of RAM minimum
- Mac OS 10.4 or higher
- Windows 2000/XP or higher

****Note:** You may be able to install the S2VR into an older Mac or PC, however the overall performance will be slower than with newer systems. For uncompressed HD video editing, we recommend a Dual Core G5 or higher with 1Ghz machine running with 1GB of RAM or better.

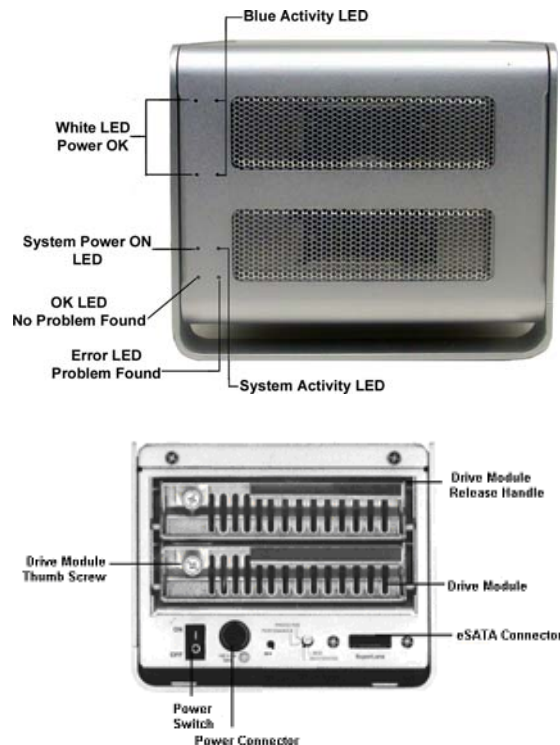
The information of the products in this manual is subjected to change without prior notice and does not represent a commitment on the part of the vendor, who assumes no liability or responsibility for any errors that may appear in this manual.

Copyright © 2006, CalDigit, Inc. All rights reserved
S2VR Duo S2VR HD, S2VR Pro, CalDigit name and logo are registered trademarks of CalDigit Inc. All other trademarks are the property of their respective holders.

3. Package Contents

- S2VR Duo
- 2 Hard drives in tray module
- FASTA-4e HBA or FASTA-4x HBA depending on model. **(Host Card)**
- e-SATA Cable
- Quick Installation sheet
- Driver CD & Manual
- Power Cord

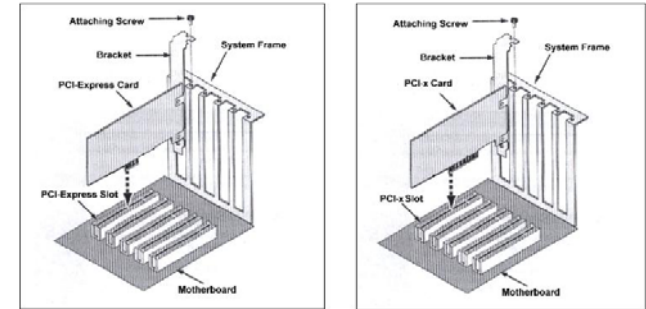
4. S2VR Interface:



5. Host Card Installation:

1. Turn off your computer and unplug the power cord

2. Remove the cover of your computer case and locate an available PCI-Express / PCI-X slot on your motherboard.
3. Install the card into the open PCI slot on the motherboard and make sure the card is firmly plugged into the slot.
4. Re-install the cover of your computer case

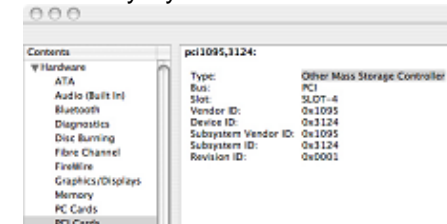


6. Host Card Driver Installation:

5. Insert CD in CD-ROM drive.
6. Open CD, then open file CalDigit FASTA-4 v1.4.1.pkg by double clicking on it
7. Introduction Screen, CLICK **Continue**
8. Select OS hard drive as the Destination.
9. Finishing Installation, CLICK **Continue**.



10. Verify System Profiler



7. Install S2VR Manager:

1. Double CLICK the application on the provided CD, CalDigit S2VR v1.0.1.pkg.
2. Introduction Screen, CLICK **Continue**.



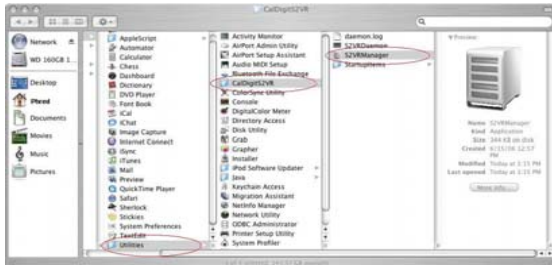
3. Select OS hard drive as the Destination.



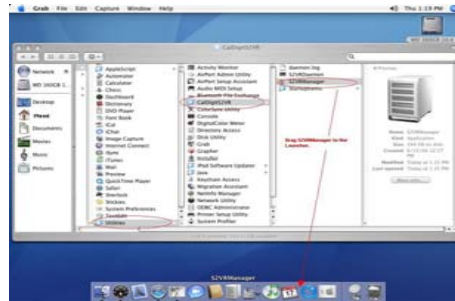
4. Installation Successful, CLICK **Close**.



5. Directory: OS drive > Applications > Utilities > CalDigit S2VR > S2VR Manager



6. Drag S2VR to the Launcher.



8. Configuring S2VR Manager:

- S2VR Manager limits configuration access with a password prompt. (Default: **admin**)



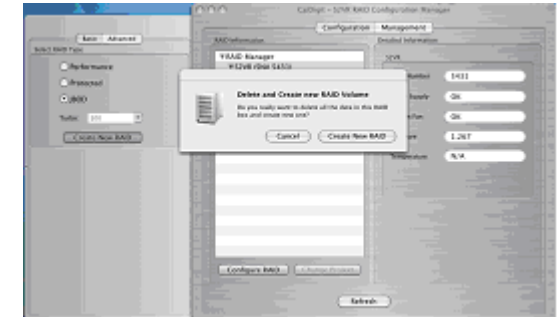
- Go to "Management Tab" setup password, Voice & E-mail notification.



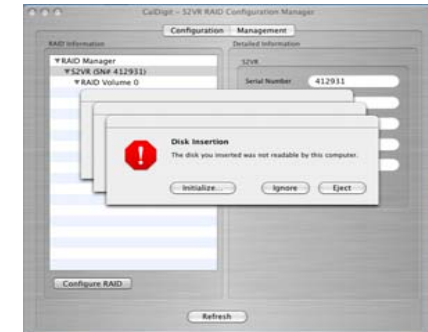
- New password must be **5 or more characters**.
- Click the "**Enable Voice notification**" box to activate the S2VR Manager voice notification.
- Click the "**Enable Email notification**" box and configure its settings to activate S2VR Manager e-mail notification.

9. Configuring RAID setting:

1. Click on "**Configure RAID**".
2. Select and click "**Create New RAID**".



Click **IGNORE** on the Disk Insertion msg.



3. Go to OS Disk Utility, select S2VR HD and create Partition or RAID



• CONGRATULATIONS!

Your S2VR HD is ready to use! Thank you for your purchase. Please visit us at www.caldigit.com for updated drivers and information on new CalDigit products.