



Getting Started



Apple, Apple Logo, Mac, the Mac logo, Macintosh, are trademarks of Apple Computer Inc. Microsoft, Windows and Windows Logos are registered trademarks or trademarks of Microsoft Corporation. All other trademarks are the property of their respective owners.

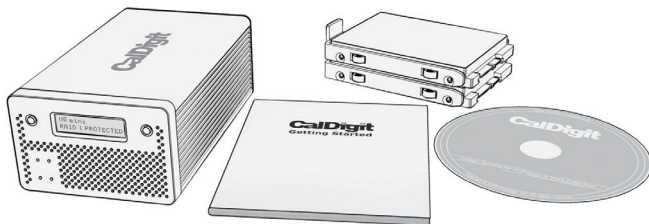
*Specifications and package contents are subject to change without notice.

Thank you for choosing the CalDigit VR mini, please use the following quick installation guides to setup your CalDigit VR mini.

Package Contents:

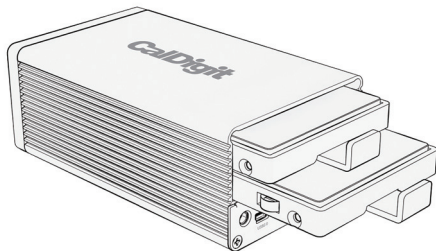
1. (One) CalDigit VR mini
2. (Two) CalDigit drive modules.
Pre-installed in the CalDigit VR mini.
3. (One) FireWire 800 cable
4. (One) FireWire 400 cable
5. (One) eSATA cable
6. Quick Installation Guide
7. CalDigit VR RAID Tool CD
8. (One) Power supply kit

The following accessories should be in the box. Please contact your CalDigit reseller for any faulty components or missing parts.



Index page

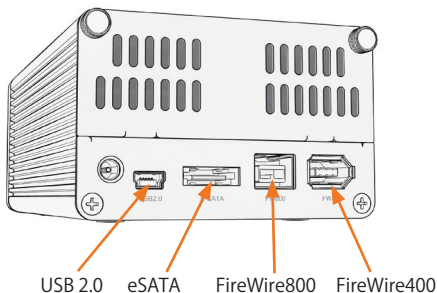
- 5 A. Installing the CalDigit VR mini
- 7 B. Feature Overview
- 7 LCD display information and instructions
- 11 RAID Tool feature overview
- 14 C. Configuring your RAID
- 14 Using LCD
- 17 Using RAID Tool
- 20 D. Order accessories and parts



A. Installing the CalDigit VR mini

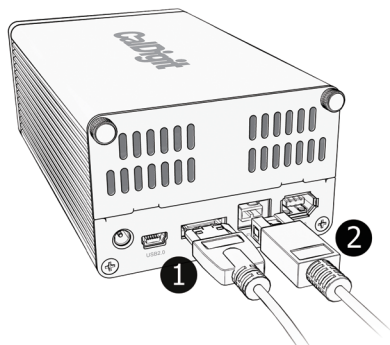
The CalDigit VR mini is ready to use, right out of the box.

1. Select the desired interface, FireWire 400, FireWire 800, USB 2.0 or eSATA. (FireWire 800, FireWire 400, and eSATA, and eSATA cables are included.)



2. When using a FireWire connection no power supply is needed, since the CalDigit VR mini is bus powered.
 - a. When using FireWire in conjunction with USB or eSATA, the FireWire connection will only supply power.
 - b. The power supply is not needed when using the FireWire connection.

3. If you are using the eSATA port as your main interface and FireWire 400 or Firewire 800 as your power source, please connect the eSATA cable to the computer and CalDigit VR mini before you connect the FireWire cable.



Note: If you would like to use the eSATA connection with your CalDigit VR mini, you can purchase one of CalDigit's eSATA controller cards (FASTA-1ex, FASTA-2e or FASTA-4e). For more information visit www.caldigit.com.

B. Feature Overview

LCD Display Information

The CalDigit mini's LCD displays information in the following order:

1. System Profile - will display the status of the following features

1.1 RAID status

Displays the current RAID status.

1.2 Serial number

Displays CalDigit VR mini serial number.

1.3 Firmware version

Current firmware version.

1.4 System temp

Displays the current system temperature.

1.5 Fan speed

Displays the current fan speed.

1.6 Disk 1 temp

Displays temperature of the top hard drive.

1.7 Disk 2 temp

Displays temperature of the bottom hard drive.

1.8 Beeper enable

Provides audible alarm.

1.9 Auto rebuild

Enable or disable auto rebuild under RAID 1.

2. Create RAID

2.1 Create RAID 0

Data is written onto two hard drives simultaneously, for maximum speed.

2.2 Create RAID 1

Identical data is written onto two hard drives with maximum protection.

2.3 Create SPAN

Combine two hard drives into one volume, data will be accessed from the first hard drive until full, then the second hard drive will be used.

2.4 Create JBOD

Configuring two hard drives in the VR without RAID features. Each drive shows up separately in the OS.

3. MISC config - internal system set up

3.1 LCD power on / off

Turn the LCD display screen on or off.

3.2 Beeper on / off

Turn on the audible alarm.

3.3 Turbo mode on / off

Turn off the audible alarm.

3.4 Japanese language

Display menu content in Japanese.

3.5 Access LED

Turn on/off drive status LEDs.

3.6 Read only mode

This turns the VR mini into a Read-only volume. This function is not compatible with RAID 1.

3.7 Auto rebuild

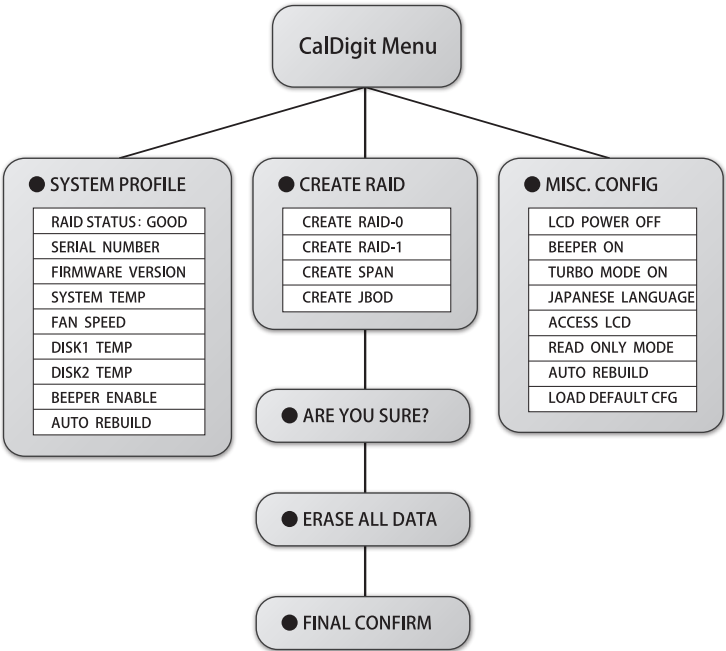
Enable or disable auto rebuild under RAID 1.

3.8 Load default cfg

Reset default settings.

For more information about the CalDigit VR mini's LCD, please go to

<http://www.caldigit.com/support.asp>



RAID Tool Feature Overview

RAID Tool provides the current status of the CalDigit VR mini and also allows you to change it's settings.



1. RAID information

Provides related information for the current RAID set.



2. RAID configuration

Create RAID 0, RAID 1, SPAN or JBOD.



3. Email configuration

Error logging system set up. When an error occurs, the CalDigit VR mini will automatically send out the log to the system administrator via email. Internet and proper email account services are required.



4. Environmental monitor

Obtain the current environmental status for the CalDigit VR mini.



5. Event Log

Displays log of all CalDigit VR mini events.



6. Firmware update

Manually update the CalDigit VR mini Firmware, to add new features or patches for the CalDigit VR mini.



7. MISC. Configuration

Set RAID Tool password protection, LCD config enable/disable, beeper enable/disable and VR mini nickname to customize LCD with personalized message, Turbo mode, and LED status.



8. Re-Scan

Re-Scan for additional CalDigit VR mini(s) or CalDigit VR(s) on the computer.



9. Online Update

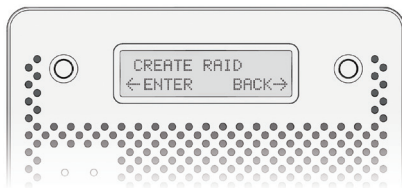
Online search for current version of firmware or RAID Tool software. Internet connection required.

For more information about GUI, please go to
<http://www.caldigit.com/support.asp>

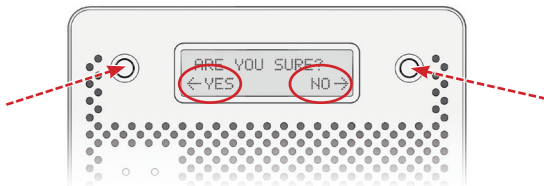
C. Configuring your RAID

If you wish to create your RAID from the LCD, please follow the steps below.

1. Turn on the CalDigit VR mini, once it has booted, press the right button next to the LCD panel. Press the right button one more time when the LCD displays "Create RAID", then confirm the selection by pressing the left button.



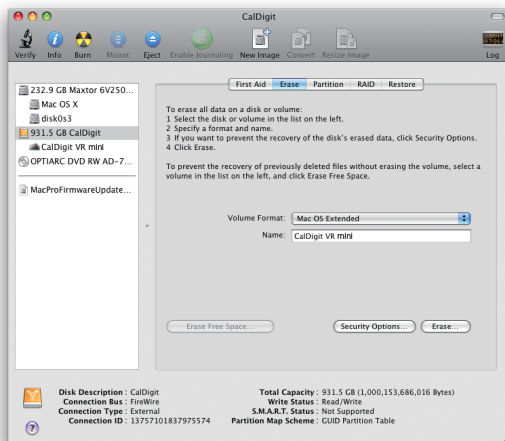
2. You will see the CalDigit VR mini cycle through the following RAID levels; R0>R1>SPAN>JBOD. Select the desired RAID level by pressing the **right** button. You will receive a confirmation message with the RAID level you selected. Select Yes to continue, Cancel to go back. When you see "Are you sure?" press the **left** button to confirm, or the **right** button to cancel and return to the previous menu.



3. Press the **left** button when you see "Erase all data". Or press the **right** button to cancel and return to the previous menu.
4. Press the **left** button when you see "Final Confirm". This will erase all data on the RAID. Or press the **right** button to cancel and return to the previous menu.
Note: This will erase all data on the RAID.
5. Please wait a moment while the CalDigit VR mini creates the RAID.
6. The CalDigit VR mini will restart twice automatically.
7. Please restart your computer.
8. The CalDigit VR mini will display the new RAID setting. It can be verified via RAID Tool or the LCD panel.

***Do Not remove power cable / firewire cable during RAID change.**

9. Once the computer has restarted, a message will appear asking you to initialize your CalDigit VR mini.
- Disk Utility will launch and allow you to format the CalDigit VR mini. If you do not see this message, simply launch Disk Utility which can be found in the **Applications > Utilities** folder.
 - Select the erase tab.
 - Select your desired volume format (Mac OS extended is recommended) and name your volume.
 - Select Erase and Disk Utility will format the CalDigit VR mini.
 - The CalDigit VR mini will mount and is now ready for use.



If you wish to create your RAID using RAID Tool, please follow the steps below.

1. Launch RAID Tool. RAID Tool can be found in the **Applications > CalDigit RAID Tool** folder.
2. Select the desired CalDigit VR mini to enter the menu.



3. Select RAID configuration. Note: the current RAID type will be displayed on the RAID Tool's information bar (left side).

4. Choose the desired RAID level and click "Yes" to proceed. Click "No" to cancel.

Warning: Changing RAID level will cause all data on the array to be lost.

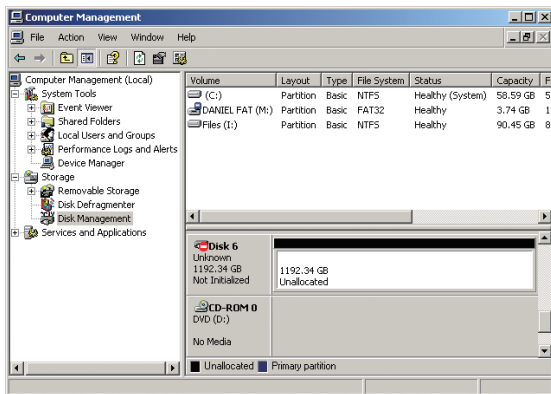
5. The CalDigit VR mini will now perform the RAID change, and it will restart twice automatically.
6. Check LCD and GUI to make sure RAID levels match.



7. Please restart your computer.

***Do Not remove power cable / firewire cable during RAID change.**

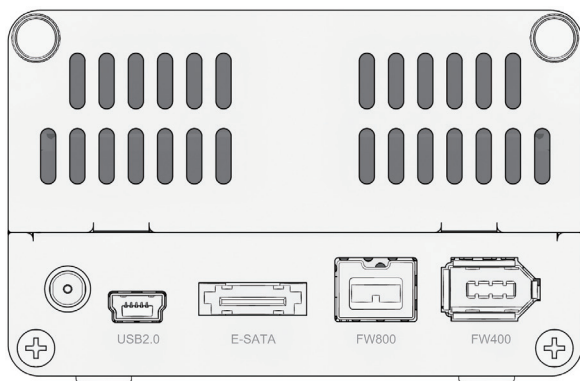
8. Run Disk Utility (Mac) or Disk management tool (PC) to format your CalDigit VR mini.



9. Once the computer has restarted, a message will appear asking you to initialize your CalDigit VR mini.
- Disk Utility will launch and allow you to format the CalDigit VR mini. If you do not see this message, simply launch Disk Utility which can be found in the **Applications > Utilities** folder.
 - Select the erase tab.
 - Select your desired volume format (Mac OS extended is recommended) and name your volume.
 - Select Erase and Disk Utility will format the CalDigit VR mini.
 - The CalDigit VR mini will mount and is now ready for use.

D. Order accessories and parts

- Power supply kit:
Part # CDPS-VRmini SKU # 705101
- eSATA cable:
Part # CBeSATA-3-CD SKU # 703102
- FireWire 800 cable, 9-pin to 9-pin, 6ft:
Part # CBFWY9-6 SKU # 704102
- FireWire 800 cable, 9-pin to 4-pin, 6ft:
Part # CBFWY4-6 SKU # 704103
- FireWire 800 to FireWire 400 cable, 9-pin to 6-pin, 6ft:
Part # CBFWY6-6 SKU # 704104
- USB 2.0 cable, A to Mini, 3ft:
Part # CBUSBAM-3 SKU # 705102
- eSATA Extender:
Part # CBeSATA-Extender SKU # Should be 704113
- VR mini 320GB Drive Module:
Part # VRmini-DM-320 SKU # 771511
- VR mini 500GB Drive Module:
Part # VRmini-DM-500 SKU # 771502



CalDigit VR mini Manual v1.0 RC1

www.caldigit.com

©Copyright 2009 CalDigit, Inc. All Rights Reserved